



CONTENTS

01

DESIGN DESCRIPTION

02

DESIGN SPEC

03

TECHNICAL INFO

04

COST OUTLINE



DESIGN DESCRIPTION

W: 1400mm H:2600mm D:348mm x2

- Alcove shelving
- Closed cupboard storage

Designed to fit seamlessly into a fireplace alcove, this modern design offers a simplistic shelving and storage solution. The unit is cut and finished off-site, creating minimal mess and disturbance on final fitting on site.

We have used a soft warm cashmere grey in this example, however, there are a range of colours and textures to suit your interior. The design measurements are bespoke to fit seamlessly wall to wall and to the ceiling.

Need more drawers or shelves? As with all Digital Furniture designs, the units are modular for easy customization according to taste and storage requirements.



DESIGN SPEC

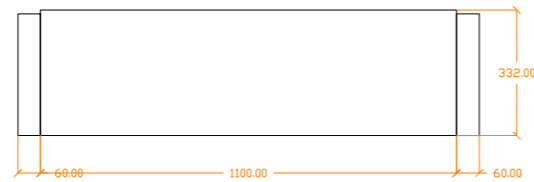
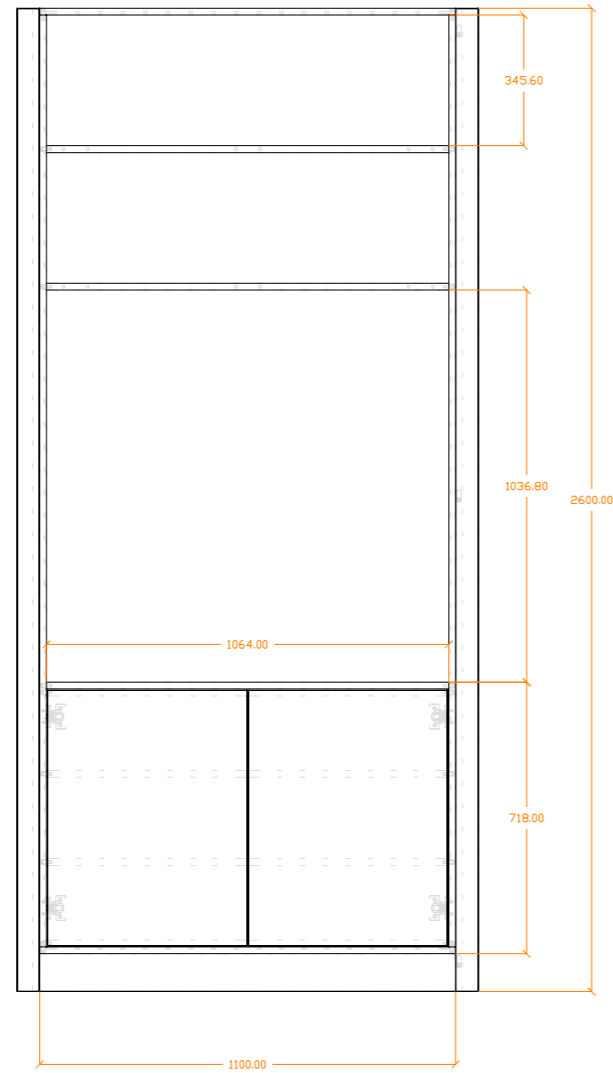
This configuration it is designed to accommodate:

- Closed cupboard shelving
- Fixed open shelving

Why Digital Furniture?

The key advantage to our designs is that they are precision cut, facilitating a quick assembly on site and minimising dust and disruption.

Assembly is swift without compromising design or attention to detail. The materials we use are durable, sustainable, recyclable and sourced from established European manufacturers.



TECHNICAL INFO

The measurements quoted are for price indication purposes but can be adapted to any room size and with a storage configuration to suit personal requirements.

Please contact design@digitalfurniture.com for your own personal design or adaptation.

This stock design can be created in over 300 colours, textures and finishes.

PRICE UPON REQUEST

This design has been specified in high quality pre-finished boards (Cashmere Grey)

Pricing includes: design, supply, delivery and fittings.

On site assembly is quoted separately.

Where specified, if required, electrical works, cabinetry and room lighting are also quoted separately.

We also offer a removal service of existing furniture and can prepare the room for installations.

COST EXAMPLE LIVING ROOM 1

How do we work?

Step 1 Speak to us about your needs. We can work remotely from measurements and pictures you supply or we can visit your home to see what you require and give our own design perspective. We can send you samples of materials or bring them with us.

Step 2 We create the design and configuration of your furniture based on the materials chosen.

Step 3 We provide a full cost estimate.

Step 4 Once a design and pricing has been agreed a deposit is taken and we begin production.

Step 5 A delivery and installation date is selected

Step 6 Our team come to site to prepare the room for fitting if required and install your new furniture.

Step 7 Final payment is made upon completion and you can sit back and enjoy your new furniture.

Please contact sales@digitalfurniture.com for a bespoke quotation, for samples or for further information

All Digital Furniture designs can be adapted to your individual needs and taste. We offer bespoke cabinetry that is personalised and optimised to meet the demands of your home.

Our designers work with you or your interior designer to produce a tailor-made product with the right configuration of cupboards, drawers, shelves, rails or racks to house or display your belongings as you wish and thus transform your room.

Our service does not start and finish with the furniture design, we also have a team of electricians, Audio, Video and Data Network specialists who can incorporate lighting, TV, audio, gaming or other technology into your furniture designs, keeping clutter to a minimum. We can integrate any tech or new lighting into existing control systems if required. No more wires and the right furniture ventilation solutions to ensure your tech equipment works efficiently and out of sight. Our team can also provide electric, lighting and tech solutions for the whole room or home.

Digital Furniture Ltd

Website

www.digitalfurniture.com

Phone

0208 947 1205

Sales & Marketing

sales@digitalfurniture.com

SW, London

VAT Registration No. 384 8639 41

Company Registration No. 13417285

